



# Create a Clay Walrus

My, what big tusks you have! Walruses live throughout the Arctic Circle and are related to seals and sea lions. To stay warm in the chilly Arctic waters, walruses have thick layers of blubber (fat) and use their vibrissae (whiskers) to find food. Their long tusks help them haul out onto ice floes and defend themselves. Use a toothpick and some clay to create your own clay walrus.

## Materials

Photo of a walrus (page 2)

Ice block template (page 3)

1 ball of craft putty, sculpting clay, or play dough (recipe on page 4)

1 toothpick

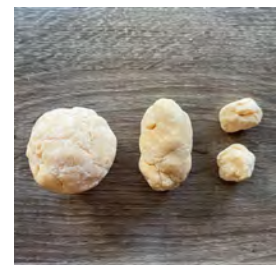
2 whole peppercorns or black beads

Scissors

Natural bristles, twine, or hemp string

## Directions

1. **Divide** the clay into two pieces. **Roll** one piece into a short log and the other into a ball. **Pinch off** two small pieces from the log and set aside—these will be the front flippers.
2. **Make the body** by pressing the log onto the ball and smoothing the seam. The log portion will be the back of the body and the ball portion will be the front of the body.



*Note:* If you are using homemade play dough, you may need to add water when smoothing the seams.



3. **Look** carefully at the walrus photo to sculpt the body. Some things to notice:

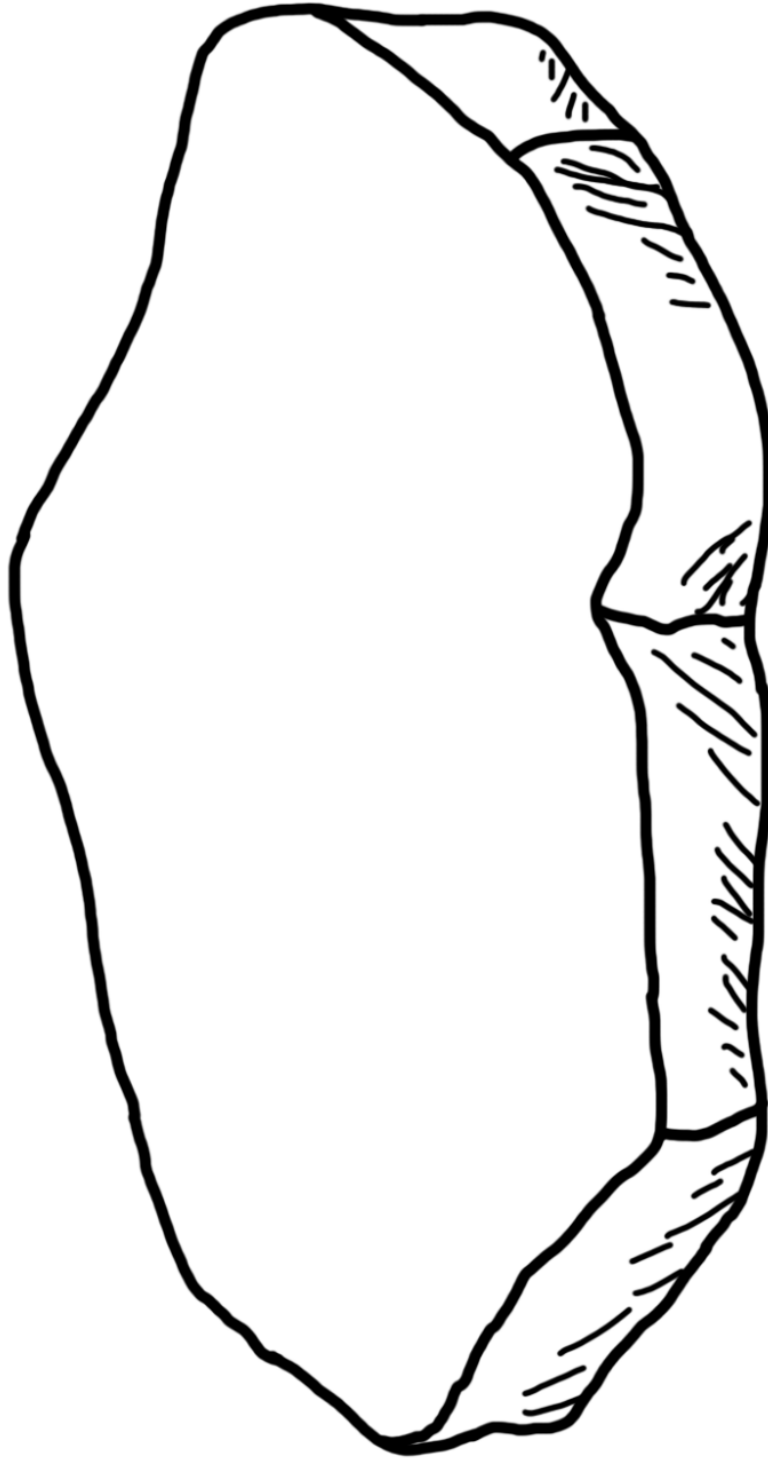
- a. The chest area is very large.
- b. The body gets thinner toward the hind flippers.
- c. The neck is not visible.
- d. The front flippers point to the back of the body.
- e. The muzzle has two tusks and a lot of whiskers.

4. **Form** the front flippers from the two small pieces of clay you set aside earlier and attach them to the body.
5. **Make** two eye holes and two nostrils using the end of the toothpick. **Press** one bead or peppercorn in each eye hole. *Optional:* You can also trace some wrinkle lines on the body.
6. **Snap** the toothpick in half and **insert** one under each side of the muzzle.
7. **Cut** the natural bristles, twine, or hemp string into short pieces and insert them in the muzzle to make the whiskers. Walrus whiskers are extremely sensitive! They help the walrus find prey like clams along the murky sea bottom.
8. *Optional:* **Print and cut out** the ice block template. **Place** the clay walrus on top of it so they can take a rest.





CALIFORNIA  
ACADEMY OF  
SCIENCES





## Play dough recipe

*Adult supervision and assistance required.*

### Materials

- 1 cup flour
- $\frac{1}{3}$  cup salt
- Mixing bowl
- $\frac{1}{3}$  cup of warm water
- 2 tsp vegetable oil
- 2-3 drops of food coloring (your choice, optional)

### Directions

1. **Combine** 1 cup flour and  $\frac{1}{3}$  cup salt in a large mixing bowl.
2. In a separate container, **mix together**  $\frac{1}{3}$  cup of warm water, 2 tsp vegetable oil, and 2-3 drops of food coloring.
3. **Combine** the dry ingredients with the wet and form a dough. **Knead** and add flour or water as needed until you have a play dough consistency.
4. Store in an airtight container in the refrigerator for up to 2 months.